

Conference Bridge Solution for the Electra Elite® IPK/IPK II

The Electra Elite IPK/IPK II conference bridge application is integrated as part of NEC's Electra Elite IPK/IPK II solution. The Electra Elite IPK/IPK II allows you to converge your voice and data networks and enjoy the advantages of Voice over Internet Protocol (VoIP). The Electra Elite IPK/IPK II gives you a choice. You can deploy traditional circuit switched technology, VoIP, or a combination of these, all from one system. You have the freedom to adopt VoIP when and where you need it, so current technology investment is protected for the future.

The Electra Elite IPK/IPK II delivers high-powered features to small, medium and expanding businesses. Smaller companies enjoy "big company" features with the Electra Elite IPK/IPK II, and expanding businesses simply flourish within existing investments. Regardless of whether a business has 8 or 200 employees, the Electra Elite IPK/IPK II consistently delivers a great system for the SMB marketplace. The Electra Elite IPK/IPK II's conference bridge solution complements the standard basic business features and is affordable and feature rich.

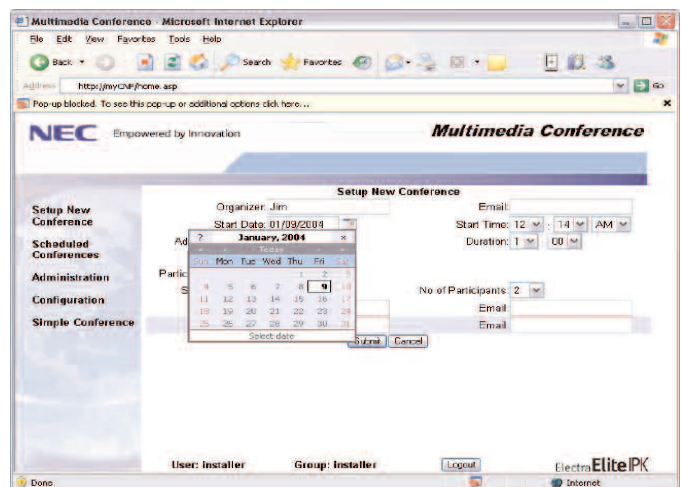
In-house conference systems are no longer luxuries or reserved for big business. Owning a conference bridge eliminates the ongoing costs of

using outside vendors to host conference calls, and as employees become decentralized, ongoing quality collaboration is a business requirement, not a luxury. The initial investment in the Elite Electra Elite IPK/IPK II's Conference Bridge is quickly recovered and leads to a permanent, long-term reduction in business expenses. Owning equipment also helps keep your conference calls secure and confidential.

The Conference Bridge delivers up to 16 channels for conferencing. The latest in DSP technology is used to deliver fully amplified, balanced and superb voice quality.

The advanced features of the Conference Bridge are accessed and managed using your network and standard Web browser. It is unnecessary to load

software onto a PC; all programs and data are stored within the Electra Elite IPK/IPK II system. The Conference Bridge may be accessed from any PC that has access to the network with the Electra Elite IPK/IPK II attached. It even operates in those businesses without a network in Simple Mode. When set for Simple Mode, the Conference Bridge is virtually plug-and-play with pre-configured passwords and conference duration. Conference users schedule their conferences up to one year in advance using the intuitive GUI. If e-mail addresses are entered for participants, an e-mail notification detailing the conference schedule is sent. Each participant receives a unique password. This method offers the highest security level.



Electra Elite IPK II Conference Bridge Solution

- Dynamically allocated, 2-16 party, fully amplified and balanced conference
- Password protection for each conference
- Conference Entry voice message
- Conference Password Request
- Conference Exit voice message
- E-mail notification (when enabled) sends each participant notification of a pending conference
- Host Required (when enabled) requires the host/organizer to be logged into the conference before any other participant can enter
- Remote conference programming with conference scheduler
- Web User Interface for conference schedule management and administration
- Programmable gain adjustment
- DTMF detection for manual setup options

Feature	Simple Mode	Advance Mode
Number of Parties in a conference	2, 4, 8 or 16	Configurable up to 16 in steps of 1
Requires connection to customer network	No	Yes
Password Protected Conferences	Yes	Yes
Plug and Play (No additional Configuration from first init)	Yes	Yes – CPU programming with configuration required on CNF board
Recordable Customized Greeting	Yes	Yes
Admission Control (Organizer can accept or reject participant entry)	N/A	Yes
Conference only when Host present	N/A	Yes
Conference Schedule Management	N/A	Conferences scheduled by date and time
Email integration	N/A	Supports POP3 Email Server to send both schedule and password notifications
Participant Announcements	Yes	Yes
Network Connection	10/100 Ethernet connector supports Auto-MDIX	10/100 Ethernet connector supports Auto-MDIX
Gain Adjustment	Configurable via Web interface	Configurable via Web-based interface
Network Time Synchronization	N/A	Yes